



# Certificate of Analysis

## CANNABUSINESS LABORATORIES, LLC

### Customer:

Kushie's Quality Cannabis  
100 Powell Place #1434  
Nashville, TN

Sample ID **230206032**  
Order Number **CB230206008**  
Sample Name **Cookies & Cream**

External Sample ID **KQC-CNC-01-010923**

Received Date **2/10/2023**  
COA Released **2/15/2023**

Batch Number **KQC-CNC-01-010923**  
Product Type **Edible**  
Sample Type **Edible**

Comments

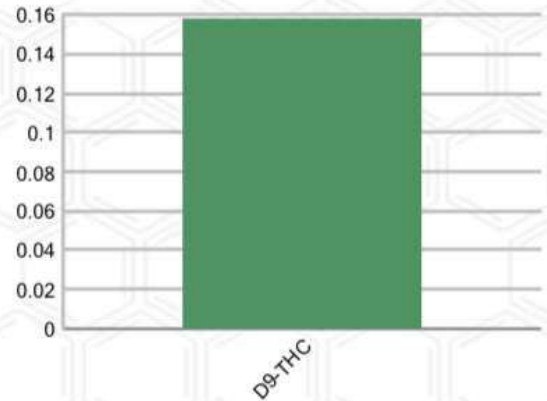
### CANNABINOID PROFILE (Product Size = 60.18 g)

Analyte	LOQ (%)	% Weight	mg/g	mg/unit
CBC	0.01	ND	ND	ND
CBD	0.01	ND	ND	ND
CBDa	0.01	ND	ND	ND
CBDV	0.01	ND	ND	ND
CBG	0.01	ND	ND	ND
CBGa	0.01	ND	ND	ND
CBN	0.01	ND	ND	ND
d8-THC	0.01	ND	ND	ND
d9-THC	0.01	0.158	1.577	94.90
THCa	0.01	ND	ND	ND
<b>Total Cannabinoids</b>		<b>0.158</b>	<b>1.576</b>	<b>94.84</b>
<b>Total Potential THC</b>		<b>0.158</b>	<b>1.576</b>	<b>94.84</b>
<b>Total Potential CBD</b>		<b>N/A</b>	<b>N/A</b>	<b>ND</b>
<b>Total Potential CBG</b>		<b>N/A</b>	<b>N/A</b>	<b>ND</b>
<b>Ratio of Total Potential CBD to Total Potential THC</b>				<b>N/A</b>
<b>Ratio of Total Potential CBG to Total Potential THC</b>				<b>N/A</b>

### SAMPLE IMAGE



### CANNABINOIDS % Weight



\*Total Cannabinoids refers to the sum of all cannabinoids detected.

\*Total Potential CBD = (0.877 x CBDa) + CBD. \*Total Potential THC = (0.877 x THCa) + THC. \*Total Potential CBG = (0.877 x CBGa) + CBG.

\*Total Potential THC/CBD are calculated to take into account the loss of an acid group during decarboxylation.



*J. Hobgood*  
Laboratory Manager

SIGNATURE

Jamie Hobgood

LABORATORY MANAGER

02/15/2023 10:00 AM

DATE

This product has been tested by CannaBusiness Laboratories using validated testing methodologies and a quality system. Values reported relate only to the product tested. CannaBusiness Laboratories makes no claims as to the efficacy, safety, or other risks associated with any detected or non-detected levels of any compounds reported herein. This Certificate shall not be reproduced except in full, without the written permission of CannaBusiness Laboratories. Photo is of sample received by the lab and may vary from final packaging. The results apply to the sample as received.