



Certificate of Analysis

CANNABUSINESS LABORATORIES, LLC

Customer:

Kushie's Quality Cannabis
100 Powell Place #1434
Nashville, TN

Sample ID **230221021**
Order Number **CB230221009**
Sample Name **Smores**

External Sample ID **KQC-SMS-01-010923**

Received Date **2/24/2023**
COA Released **3/1/2023**

Batch Number **KQC-SMS-01-010923**
Product Type **Edible**
Sample Type **Edible**

Comments

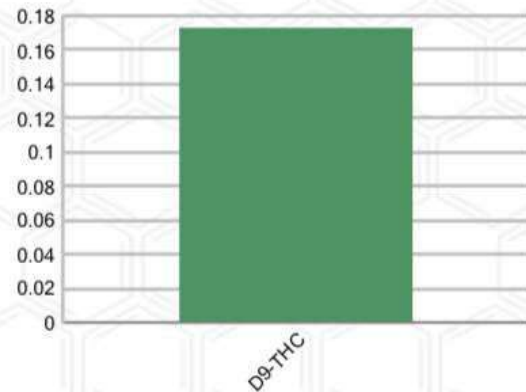
CANNABINOID PROFILE (Product Size = 64.29 g)

Analyte	LOQ (%)	% Weight	mg/g	mg/unit
CBC	0.01	ND	ND	ND
CBD	0.01	ND	ND	ND
CBDa	0.01	ND	ND	ND
CBDV	0.01	ND	ND	ND
CBG	0.01	ND	ND	ND
CBGa	0.01	ND	ND	ND
CBN	0.01	ND	ND	ND
d8-THC	0.01	ND	ND	ND
d9-THC	0.01	0.173	1.733	111.40
THCa	0.01	ND	ND	ND
Total Cannabinoids		0.173	1.734	111.50
Total Potential THC		0.173	1.734	111.50
Total Potential CBD		N/A	N/A	ND
Total Potential CBG		N/A	N/A	ND
Ratio of Total Potential CBD to Total Potential THC				N/A
Ratio of Total Potential CBG to Total Potential THC				N/A

SAMPLE IMAGE



CANNABINOIDS % Weight



*Total Cannabinoids refers to the sum of all cannabinoids detected.

*Total Potential CBD = (0.877 x CBDa) + CBD. *Total Potential THC = (0.877 x THCa) + THC. *Total Potential CBG = (0.877 x CBGa) + CBG.

*Total Potential THC/CBD are calculated to take into account the loss of an acid group during decarboxylation.



J. Hobgood
Laboratory Manager

SIGNATURE

Jamie Hobgood

LABORATORY MANAGER

03/01/2023 9:12 AM

DATE

This product has been tested by Cannabusiness Laboratories using validated testing methodologies and a quality system. Values reported relate only to the product tested. Cannabusiness Laboratories makes no claims as to the efficacy, safety, or other risks associated with any detected or non-detected levels of any compounds reported herein. This Certificate shall not be reproduced except in full, without the written permission of Cannabusiness Laboratories. Photo is of sample received by the lab and may vary from final packaging. The results apply to the sample as received.